

SQUAREDEAL

Established 1987

**SOLAR PHOTOVOLTAIC
SYSTEMS**

Telephone: 0800 7312092

www.squaredealsolar.co.uk

email: info@squaredealsolar.co.uk

Branches at:

Unit 6-7
BRAMBLE ROAD
TECHNO TRADING EST
SWINDON
WILTSHIRE SN2 8HB

Unit 11
BROOKSIDE BUSINESS PARK
BROOKSIDE AVENUE
RUSTINGTON
WEST SUSSEX BN16 3LP

UNIT D18
BARWELL BUSINESS PARK
LEATHERHEAD ROAD
CHESSINGTON
SURREY KT9 2NY



SQUAREDEAL

ESTABLISHED 1987



Thank you for your enquiry. We are pleased to present ourselves for the consideration of fitting a Solar Photovoltaic System.

You will find the following papers telling you who we are and how we conduct ourselves in fulfilling your requirements.

Whatever your individual needs, we will be pleased to meet at a mutually agreed time to discuss it.

There is no obligation – we are not pressure salesmen – we aim to provide a quality service to meet your requirements, recognising the importance of such an investment.

We will provide a detailed quotation, together with a specification of work to be undertaken, and can offer a degree of flexibility on the installation timing. We maintain a list of our completed installations and will be pleased to let you use this as a reference to the quality of our workmanship. In addition, you will be welcome to inspect both current and/or existing installations.

We are available to help and advise prior to, during the contract, and in support, once the installation has been completed. We are proud of our reputation for providing a Quality Service, and appreciate the many references passed forward from our already satisfied customers.

We currently operate from two branches one in Rustington and one in Chessington, and you are very welcome to visit us at any time from 8.00 am – 5.00 pm Monday to Friday. The address and phone numbers can be found on the front of the brochure.

THE COMPANY

Squaredeal was established in 1987 and has specialised in the installation of roofline products to domestic and commercial properties and has gained a reputation for high class installations and a top quality service.

We are a registered M.C.S. accredited solar installer.

Please feel free to look us up on the www.checkatrade.com website or HomePro Insurance on www.homeproinsurance.co.uk under Check-A-Tradesman.

THE PRODUCTS

All of our solar panels are sourced from the M.C.S. list of approved products and inverters and roof brackets are sourced to perfectly complement the installation.

Product data sheets of our standard panels and inverters can be found later in the brochure.

Should you wish to have a particular panel or inverter installed, we will be happy to provide you with a quotation.

WHY SHOULD I HAVE PANELS?

As we all know fossil fuels are damaging our environment, are expensive, and will eventually run out. It is vitally important that we all take collective responsibility to try to shape our future in a way that does not rely on using polluting technologies, but rather a greener sustainable power source.

However, in the real world, we all have pressing financial responsibilities, which in most cases do not allow us the freedom to spend money on expensive green technology.

This problem has been acknowledged by governments across Europe (most notably Germany, Spain and France), and the solution has been to introduce a payment to each person having panels installed for every kW of power they produce. This is known as the F.I.Ts payment (Feed in Tariff scheme).

The result of the F.I.Ts payment has meant that an investment in solar technology will return an average of 6-10% per year and pay for itself within a ten year period.

Due to the massive success of the F.I.Ts scheme across Europe, the UK government has introduced its own F.I.Ts scheme on the 1st April 2010, which now means that UK residents can benefit from the terrific financial benefits of owning Solar Photovoltaic panels.

FEED IN TARIFFS EXPLAINED (FiTs)

The Feed in Tariff is funded via a levy imposed on all of the energy providers. This levy is then passed on to the end user (i.e. you!).

The collected funds are then used to pay for the Feed in Tariff. Every household that installs solar after April 2010 will benefit financially in the following three ways:-

1. **Generation Tariff:** A fixed price for each unit (i.e. kWh) of electricity generated by the solar electricity system, whether used within the home or exported, guaranteed for a period of 20 years.

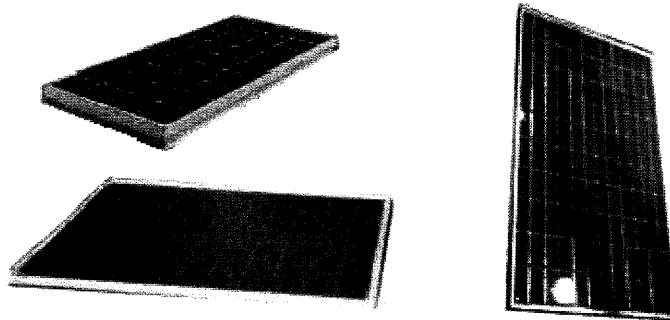
2. **Export Tariff:** A price for each unit of electricity generated by the solar electricity system and exported to the grid, index linked and guaranteed for a period of 20 years. At some stage smart meters will be installed to measure what you export but until then it is estimated as being 50% of the electricity you generate.
3. **Fuel Savings:** You will be making savings on your electricity bills because generating electricity to power your appliances means you do not have to buy as much electricity from your energy supplier. The amount you save will vary depending on how much electricity you use on site and how efficiently you use the generated energy.

It should also be noted that the cost of purchasing electricity from the grid will inevitably rise in the future, which will mean even greater savings!

Frequently Asked Questions

What Are Solar Photovoltaic Panels?

Solar Photovoltaic panels or cells are made from one or two layers of extremely thin semi conducting material, usually silicon (one of the most abundantly occurring natural materials on earth). When light passes through these layers, an electrical field is created. The appearance of the panels is similar to a domestic plasma television screen.



A 180 watt panel will typically produce 180 watts of power per daylight hour. The panels are then connected together to form an array and the power from each panel is added together to give a final output power i.e. $10 \times \text{panels} = 10 \times 180\text{watts} = 1.8\text{kw}$.

Which panels are the best?

All panels have to conform to M.C.S Standards. Many companies will only promote the efficiency of their panels, but the build quality of the panels is of more importance. Remember they will be on your roof for over 25 years and they will take a battering from the elements.

What does efficiency mean?

Efficiency is all about the amount of power a panel can produce from its surface area. You can work the efficiency of a panel out yourself by multiplying the height by the width of a panel, multiplying by 1000, then dividing this number into the output wattage of the panel, for example: Height 1.651m x Width 0.986m x 1000 = 1627.88, then divide 1627.88 into 245 (Wattage) = 15.05% efficiency. This is based on the Conergy 245w Noir Panel. Efficiency is only important when installing panels to small roof areas. Remember a 200w panel can only produce 200w of output however efficient it is.

Will the panels work on a cloudy day?

Yes. Although bright sunlight is best, Solar PV panels work by absorbing light, so they will generate energy to some degree every day regardless of the weather.

Is my roof suitable?

Solar PV panels work most efficiently on a south facing roof, but will perform satisfactorily on an east or west facing roof. North facing roofs are generally unacceptable. During our survey your roof will be assessed for structural suitability.

What are the benefits to me?

With the introduction of the feed in tariff, the financial benefit of your investment will outperform any interest you are likely to receive from a bank or building society. What's more, the payments are tax free and index linked, and it is good for the environment.

How long will I receive my F.I.T payments?

You will receive the FITs payment for 20 years. This is indexed linked and tax free.

Who can install my PV System?

Any qualified electrician with suitable working at height qualifications can install a PV system. However, only systems conforming to and installed by companies registered with the M.C.S scheme will qualify for the F.I.Ts payment.

Do I need planning permission?

Planning permission is generally only required if you live in a listed building, a conservation area, or are considering fitting panels in an area not on a pitched roof.

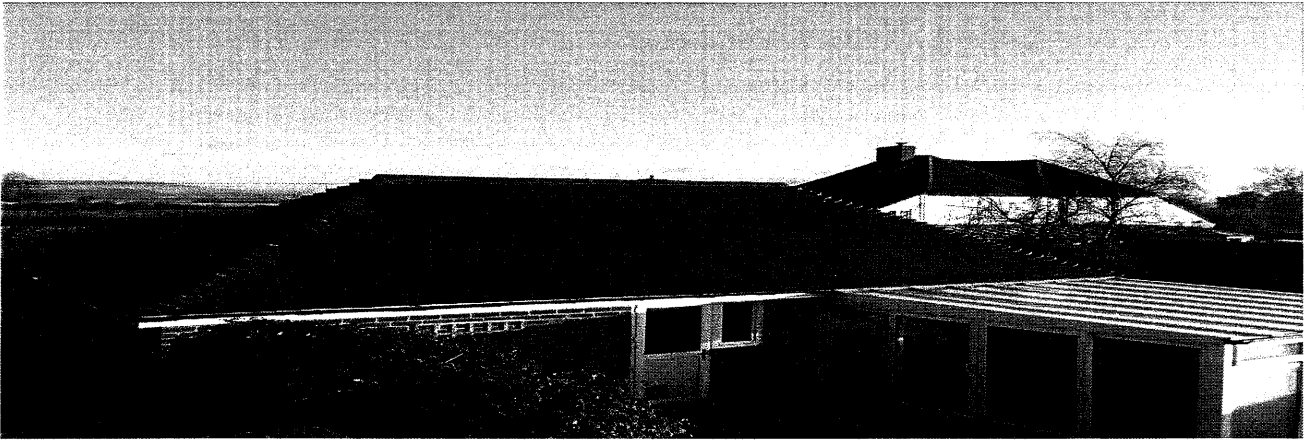
What is the M.C.S Scheme?

The Microgeneration Certification Scheme was introduced in February 2008. The aim of the scheme is to ensure the consistently high standards of both materials and workmanship and to promote the UK microgeneration market.

All MCS certified installers are evaluated against strict criteria using European and ISO standards. All persons wishing to apply for F.I.Ts payments must supply a certificate from the installation company showing that both the materials supplied, and the installation has been carried out by an M.C.S certified company.

I do not like the look of solar panels

Whilst we agree solar panels are not the most attractive product to put on your roof, there are now a few different options available. One we feel that is less obtrusive is the all black panel (see picture below). These are available in all of the makes we supply.



How long will my system last?

Because the panels have no moving parts, the life expectancy is in excess of 25 years. The inverter is guaranteed for a minimum of 10 years, but may eventually require replacement after approximately 12-15 years.

What happens if the Government changes?

The tariff is paid for out of a levy imposed on the power companies. They in turn pass on this levy to the consumer in the form of higher electricity bills. Therefore every one of us is providing the funding for the F.I.Ts payments. This means that should the current government make cutbacks, or should policies change, the F.I.Ts payments will remain for those who have registered.

How long will it take for the system to pay for itself?

At Squaredeal, we have tried to keep our installation costs as low as possible, so that our customers are able to get their money back between 7-9 years, as opposed to our competitors 10+ years.

How can I use the energy efficiently?

With all systems we install, we include two data boxes (see picture below). One will show you how much energy you are generating, whilst the other will show you how much you are using. By comparing the two, you will get to know how to use the energy you generate more efficiently.



Do I need to register my System?

At Squaredeal we would deal with all the relevant documentation on your behalf ensuring that your system is registered correctly, so that you will benefit from the Feed in Tariff payments. There is a large amount of paperwork involved with any registration and this can be mind boggling if you have to do it yourself.

What about quality control?

On completion of the installation, our electrical engineer will carry out a full inspection of the system and will give you a full explanation of how everything works and install the data boxes. He will also leave you a folder with all your relevant documentation in respect of your system.