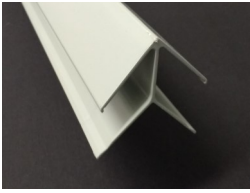
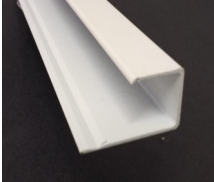


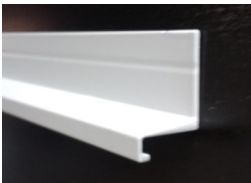
EASY FIT RANGE OF TRIMS FOR USE WITH JAMES HARDIE PLANK



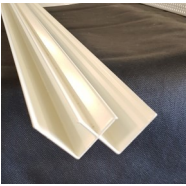
Easy fit external corner is designed and manufactured from high quality colour matched aluminium, for use with Hardie Plank cladding. Hiding the cut ends allows for more tolerance when cutting, allowing for a quicker installation. The finished look gives one clean edge with no visible gaps.



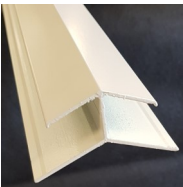
Easy fit edge trim is designed and manufactured from high quality colour matched aluminium, for use with Hardie Plank cladding. For closing off open edges around windows, dormers, bargeboards and abutments.



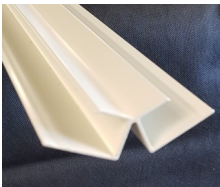
Easy fit drip trim is designed and manufactured from high quality colour matched aluminium. Drip trims are used above a door or window head to deflect any running water away from the opening. Drip trims can also be used at the bottom of vertically installed cladding such as plank or the James Hardie VL range.



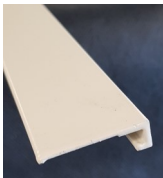
Easy fit internal 90° corner is designed and manufactured from high quality colour matched aluminium. Hiding the cut ends allows for more tolerance when cutting, allowing for a quicker installation. The finished look gives one clean edge with no visible gaps.



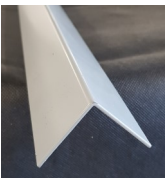
Easy fit external 135° corner is designed and manufactured from high quality colour matched aluminium. Hiding the cut ends allows for more tolerance when cutting, allowing for a quicker installation. The finished look gives one clean edge with no visible gaps.



Easy fit Internal 135° corner is designed and manufactured from high quality colour matched aluminium. Hiding the cut ends allows for more tolerance when cutting, allowing for a quicker installation. The finished look gives one clean edge with no visible gaps.



Easy fit top trim is designed and manufactured from high quality colour matched aluminium. Easy Fit top trim is mainly used for covering the exposed screw or nail fixing on the top board, allowing for a more aesthetically pleasing finish.



Easy fit 40mm x 40mm Angle is designed and manufactured from high quality colour matched aluminium. The angle can be used for flashing details, reveals or as a standard corner profile.